

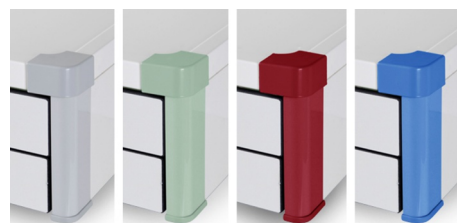


Accessories

Steerable rack for rail

Columns designed for patients with special needs, to be placed at the bedhead.

- Attached to both an upper and a lower rail by means of four clamps with knobs.
- It is possible to configure them either with three trays, or with two trays and a drawer, being these in different formats.
- The whole set can be turned horizontally and both the trays and the drawers can be moved vertically.



TECHNICAL SPECIFICATIONS

Materials:	<ul style="list-style-type: none">· Structures manufactured in anodized aluminium, with Ø38 mm polish stainless steel tubes· Tray manufactured in lacquered steel· Drawers manufactured in aluminium with finishing elements in ABS
Finishing:	Lacquered RAL 9010, Red RAL 3003, Blue RAL 5015, Green RAL 6019 Grey RAL 7035
Maximum load:	60 kgr